

PRODUCTION WORKSHOP / QUALITY INSPECTION



What is PS plate meaning

PS plate(Presensitized Plate) consists of an aluminum sheet and a layer of coating, i.e., a photosensitive layer. The photosensitive layer is a layer formed by coating the photosensitive liquid on the substrate. The printing industry has long used PS plates in large quantities.

As long as the black draft is done, exposed and developed, it can be printed on the machine, with large printing volume and good quality. Now with computerization, even black draft editing, film production, printing... are automated. There are two types of PS plates: negative and positive. Now positive PS plate is more commonly used.



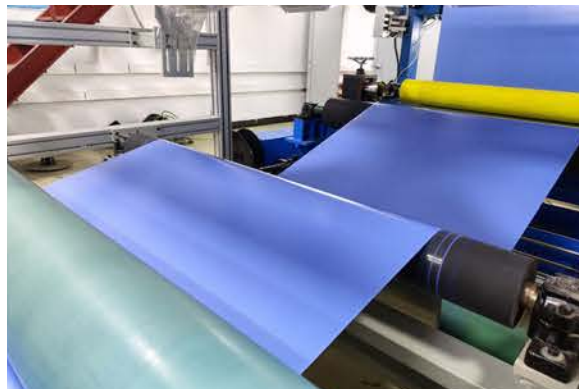
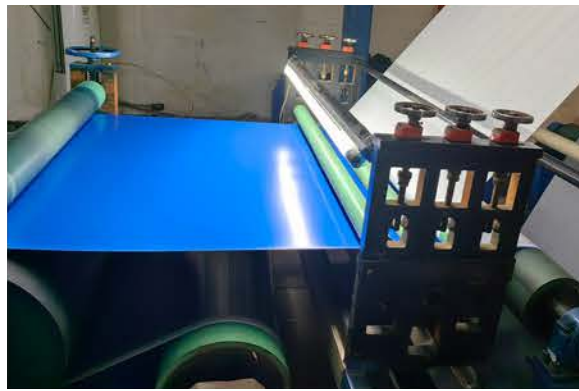
Positive PS plate specification

Name	Positive PS Plate	Spectral Sensitivity	320-450nm
Resolution	2-99%	Thickness	0.15-0.30mm
Colour	Green	Material	Aluminum
Sizes	Customized sizes	Developer Temperature	23+/-2Degree
Usage	Offset Printing, Digital Printing		
Specification	0.15mm100PCS/box;0.30mm50PCS/box		
Long impression	60000-100000impressions		
Laser Energy Required	80-180mj/Cm2		
Transport Package	Export Standard Seaworthy Package		

Features

- Consistent surface coating and ultra-high sensitivity
- Extremely high resolution and ultra-high print durability, up to 200,000-300,000 sheets
- Fine grain, high resolution, smooth and complete dots, and fine dot restoration
- Faster exposure time and excellent stability

PRODUCTION WORKSHOP / QUALITY INSPECTION



What is CTP printing

CTP is a digital printing plate imaging process that goes directly from computer to printing plate. In terms of materials, it eliminates the need for photosensitive film and its washing chemicals; in terms of technology, it eliminates the need for film exposure, washing, plate repair, and plate making; in terms of equipment, it eliminates the need for darkrooms and film exposure and washing equipment; in terms of benefits, it reduces costs, saves time and space; in terms of quality, the image transfer quality is significantly improved, and environmental pollution is reduced.



Plate CTP specification

Type	Thermal CTP plate	Shelf time	18 months
Max width	1350mm	Spectral sensitivity	830nm
Exposure energy	110~130mj/Cm2	Developing temperature	22-28°C
Resolution	1~99% at 200lpi	Developing time	25-35 sec
Safety-light	2 hours under white light		
Run length	Unbaked: 50000-100000 impressions; Baked: more than 100000 impressions.		
Plate thickness	0.15mm, 0.20mm, 0.25mm, 0.30mm, 0.40mm		
Transportation Package	Export standard, seaworthy package		
Application	High grade commercial and newspaper printing		
Specification	0.15mm100PCS/box;0.25mm50PCS/box;0.30mm50PCS/box; 0.40mm30PCX/box;customized.		

Thermal plates features

- It meets various commercial printing needs
- It is compatible with various brands of thermal platemaking machines popular on the market
- Different specifications and packages are available to meet the different printing requirements
- Excellent color and dot reproduction
- Strong resistance to chemicals and scratches in the printing workshop
- Quickly achieve water-ink balance
- The dot edges are sharper, suitable for high-end commercial color printing
- A unique film-forming resin brings high sensitivity and high printing resistance

PRODUCTION WORKSHOP / QUALITY INSPECTION



What is CTCP value for printers?

CTCP images digital information on ordinary PS plates. CTCP equipment is suitable for all medium-sized or larger printing companies. If a printing plant has two four-color printing presses and an annual plate consumption of 30,000 square meters, which most printing plants can achieve, the return on investment of CTCP equipment will be as high as 70-80%. For printing presses with more short-run printing works or professional plate-making centers, the return on investment of CTCP will be even higher!



Features of CTCP printing plates

Plate type	CTCP plate	Origin	China
Style type	Positive	Shelf time	18 months
Developing time	30-40s	Resolution	2~98%at200lpi
Spectral sensitivity	410nm	Exposure energy	50-60Mj/Cm2
Usage	Offset printing, digital printing		
Developing temperature	23+/-2degree		
Run length	50000-100000impressions		
Thickness	0.15mm,0.20mm,0.25mm,0.30mm,0.40mm		
Transportation Package	Export standard,seaworthy package		
Specification	0.15mm100PCS/box;0.25mm50PCS/box;0.30mm50PCS/box;0.40mm30PCX/box;customized		

Features of CTCP printing plates

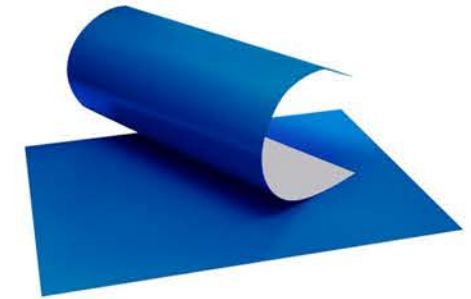
- Brand-new UV-sensitive layer formula
- High-quality electrolytically oxidized aluminum plate base
- Accurate dot reproduction
- Excellent water-ink balance performance
- Superior wear resistance
- High resolution and good storage stability
- Good adaptability to developer
- It is suitable for mainstream UV-CTP platemaking equipment in the market

PRODUCTION WORKSHOP / QUALITY INSPECTION



Double layer thermal CTP plate

The double layer thermal CTP plate is with higher printing durability, better developer adaptability and more exquisite dot reproduction performance. It is suitable for both packaging printing and commercial printing, such as posters, images, product manuals, brochures, toy packaging, corrugated boxes, and is compatible with most of the developers on the market. It is a preferred choice for mid-to-high-end printing.



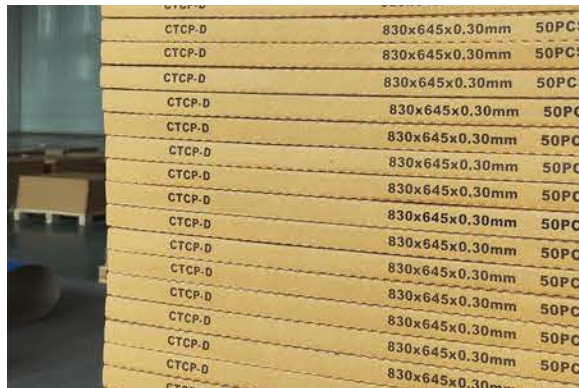
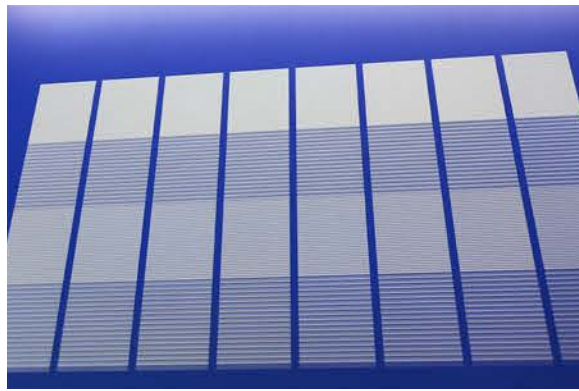
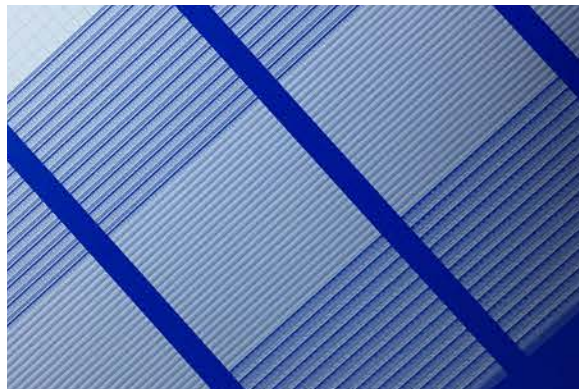
Specification

Product type	Double layer thermal CTP plate		
Max width	1350mm	Spectral sensitivity	830nm
Shelf time	18 months	Developing temperature	22-28°C
Resolution	1~99% at 200lpi	Developing time	25-35sec
Safety-light	2hours under white light		
Exposure energy	110~130mj/Cm2		
Application type	Extremely long run without baking for uv ink printing		
Plate thickness	0.15mm,0.20mm,0.25mm,0.30mm,0.40mm		
Run length	Normal ink: 100,000 - 150,000 impressions . UV ink: 50,000-100,000 impressions (actual run length may vary according to printing machine,ink,paper conditions)		
Package	0.15mm 100PCS/box;0.25mm 50PCS/box;0.30mm 50PCS/box; 0.40mm 30 PCX/box; customized		

Features of thermal CTP plate

- Resistant to UK ink
- High quality aluminum sheet and photosensitive coating
- Long run length, up to 350,000-400,000 sheets
- It can be used in bright room
- High resolution and accurate dot reproduction
- High developing tolerance and easy operation
- No need to bake the plate, extremely fast sensitivity
- It can improve prepress preparation efficiency and reduce paper and ink waste

PRODUCTION WORKSHOP / QUALITY INSPECTION



What is process free CTP

After the process free ctp plate is exposed and imaged on the direct plate-making equipment, it can be printed on the machine without any subsequent processing steps. Compared with traditional CTP plates, it eliminates the steps of developing, fixing, cleaning, gluing, drying, etc., has higher quality stability, improves work efficiency, reduces environmental pollution and equipment cost investment.



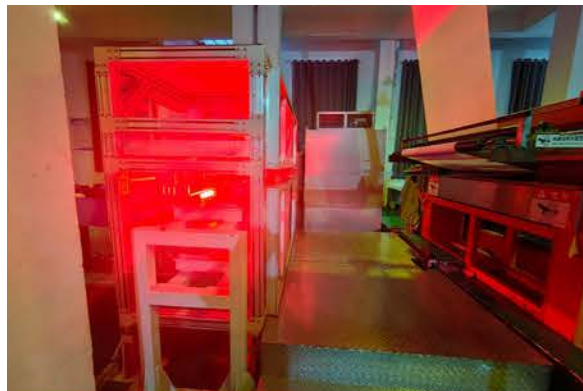
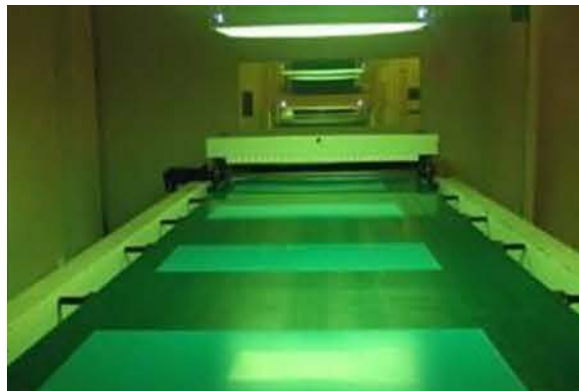
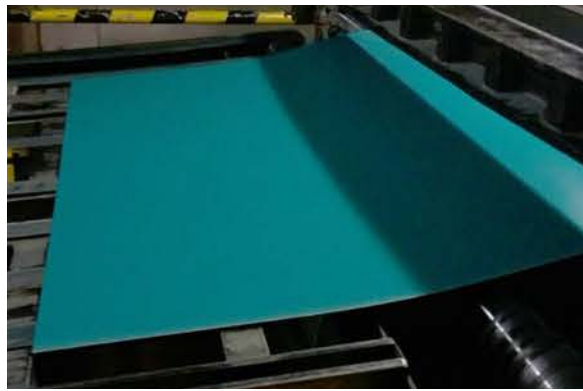
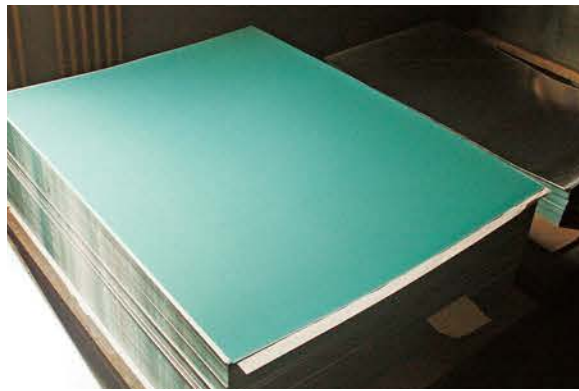
Processless printing plate specification

Product type	Process-less thermal CTP plate		
Style	Negative	Resolution	2-99 %
Thickness	0.15-0.30 mm	Colour	Grey
Material	Aluminum	Type	CTP Plate
Usage	High quality commercial and newspaper printing		
Specification	0.15mm100PCS/box;0.30mm50PCS		
Long Impression	60,000-100,000 impressions		
Developer Temperature	23+/-2Degree		
Laser Energy Required	80-180mj/Cm2		
Transport Package	Export Standard, Seaworthy Package		

Thermal CTP Processless Plate Features

- No developer is required, making the platemaking process green
- No need for rinsing, time-saving and efficient
- No need for chemical treatment and water, non-toxic and energy-saving
- Higher printability
- Better scratch resistance
- Fast development speed, good development tolerance
- Rapid ink-water balance during printing, and less paper passing
- Adapt to the mainstream CTP platemaking machine in the market

PRODUCTION WORKSHOP / QUALITY INSPECTION



What is developer

Developer is a chemical solvent that dissolves the soluble areas of the photoresist caused by exposure. HC provides two types of developers: CTCP/PS developer and positive thermal ctp plate developer. It has strong developing ability, stable performance, clear dots, high resolution, bright images, and white non-image parts. It can be used for different equipment.



CTCP/PS developer specification

Product type CTCP/PS Plate Developer

Developer preparation Developer:water=1:4-1:8

Developing time 25-60s

Storage temperature 5°C-30°C

Developing temperature 23±2 °C (too high temperature will make the dot reduction of the printing plate worse, and at the same time cause low printing durability; too low temperature will cause poor development.)

Thermal CTP developer specification

Product type Thermal CTP plate developer

Developing temperature 22-28°C

Shelf life 18 months

Developing time 25-40s

Brush speed 100-120 rev/min

Dynamic additional volume 80-120ml/m²

Static additional volume 60-80ml/h

High impact capacity 1500-2000 m² or 15 days to replace all developer (The above parameters will change according to the different plates)